

Software and ReportPack available
in the following languages



Microsoft
GOLD CERTIFIED
Partner

GFI FAXmaker™

No. 1 fax server for Exchange/SMTP/Lotus

- No. 1 selling fax server
- Over **30,000** customers
- Unbeatable on price
- Outstanding performance

Reduce costs with the No. 1 fax server

GFI FAXmaker™ is the leading fax server that makes sending and receiving faxes an efficient, simple and cheaper process. The problems with manual faxing – waiting for the fax to go through, the need for printouts, physically walking to the fax machine – are solved because GFI FAXmaker allows users to receive and send faxes directly from their email client.

With 30,000 customers and numerous awards, GFI FAXmaker is the No. 1 fax server, offering reliability and enterprise functionality at the best price on the market. The benefits are numerous: less time is spent sending, collecting and distributing faxes, noticeable cost savings and each fax received or sent is saved in digital format as an email.

BENEFITS

SUPPORTS
Windows
Vista™



- **More than 10 years as the leading fax server on the market**
- **Award-winning solution; voted #1 by Windows IT Pro readers three years running**
- **Excellent price-performance ratio and immediate return on investment (ROI)**
- **Support Microsoft Exchange 2000, 2003, 2007, 2010, Lotus Domino and MDAemon**
- **Easy to use and learn**
- **Install and forget: No burden on administrators**
- **Client has been localized in English, German, Spanish, Italian, Czech, Polish, Bulgarian, Russian, Arabic and Turkish**



No burden on the administrator

GFI FAXmaker is easy to install, requires little maintenance and integrates with existing messaging clients and customized solutions.

Seamless integration with existing business processes

GFI FAXmaker integrates with your mail server, allowing users to send and receive faxes and SMS/text messages using their email client. The company can also search for and backup all faxes in the same way that emails are stored and retrieved on the network.

Active Directory integration reduces administration

GFI FAXmaker for Exchange/SMTP/Lotus was designed from the ground up to minimize its administration. It integrates with Active Directory and therefore does not require the administration of a separate fax user database. User-related settings can be applied to Windows users or groups directly.

Supports Microsoft Exchange, Lotus Domino and other SMTP servers

GFI FAXmaker integrates with Exchange Server 2000/2003/2007/2010 via a standard Exchange SMTP connector. There are no schema updates to Active Directory. This makes GFI FAXmaker scalable and indifferent to new Exchange service packs and versions. Microsoft Exchange 5.5 is supported by creating a routing rule on the Exchange 5.5 SMTP connector. GFI FAXmaker can be installed on the Exchange server or on a separate machine, in which case no software has to be installed on the Exchange server itself! GFI FAXmaker also integrates with Lotus Domino and other popular SMTP servers.

Fax over IP (FoIP) support

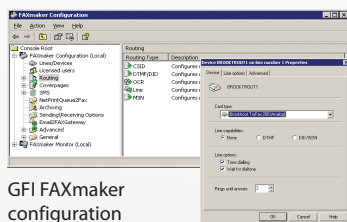
With the optional Brooktrout SR140 host based module or TE-SYSTEMS' XC-API, GFI FAXmaker integrates with your existing IP PBX to offer Fax over IP (FOIP) without any additional hardware requirements. With FOIP you can easily send faxes over the Internet, integrating with the existing IP infrastructure. GFI FAXmaker's FOIP may also be used to implement Least Cost Routing (LCR); resulting in a cost-effective reduction in international calls dialed (calls are translated into a local call at the recipient's country).

Automated fax delivery/inbound fax routing

GFI FAXmaker can automatically route incoming faxes to the user's mailbox or to a particular printer based on a DID/DDI/DTMF number or the line on which the fax was received. Faxes can also be forwarded to a public folder or assigned to a network printer per installed fax port.

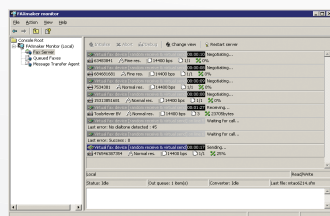
Other features:

- SMS/texting gateway allows users to send SMS/text messages from their desktop
- Multiply the value of GFI FAXmaker with powerful reporting through the integrated GFI FAXmaker ReportPack
- Supports multiple mail servers and clustering
- Native ISDN support
- Archive faxes to GFI MailArchiver, to SQL, or another archiving solution
- Assists with HIPAA compliance
- Supports Outlook Contacts
- And much more!



GFI FAXmaker configuration

Supports Brooktrout and ISDN fax cards and modems



The GFI FAXmaker server monitor

System requirements

- A Windows 2000/2003/XP/2008 server machine with at least 256 Mbytes of Ram and an 800 MHz processor.
- A professional fax device: For a complete list go to <http://kbase.gfi.com/showarticle.asp?id=KBID001220>
- If you are installing GFI FAXmaker on a separate machine, the IIS SMTP service will need to be installed.
- If using Windows 2000, ensure you have Service Pack 3 or later installed.

↓ For more information and to download your free evaluation version please visit <http://www.gfi.com/faxmaker/>

Microsoft
GOLD CERTIFIED
Partner

Contact us

Malta Tel +356 2205 2000 Fax +356 2138 2419 sales@gfi.com	UK Tel + 44 (0)870 770 5370 Fax + 44 (0)870 770 5377 sales@gfi.co.uk	USA Tel +1 (888) 243-4329 Fax +1 (919) 379-3402 ussales@gfi.com	Australia - Asia Pacific Tel +61 8 8273 3000 Fax +61 8 8273 3099 sales@gfiap.com
---	--	---	--

For more GFI offices please visit <http://www.gfi.com/company/contact.htm>

GFI
www.gfi.com